



Marehay, Ripley

Three-bedroom
semi-detached house
available to buy through
shared ownership

 ncha

“

A home of your
own at a price
you can afford

”

Specifications

Kitchen

- Fitted modern kitchen
- Integrated oven and hob
- Stainless steel extractor hood
- Contemporary mixer taps
- Vinyl flooring

Bathroom

- White suite with chrome fittings
- Tiling to ceiling around the bath
- Shower over bath
- Glass shower screen
- Vinyl flooring

Heating

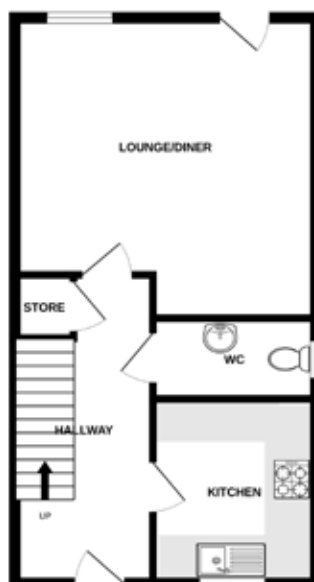
- Gas fired central heating
- Thermostatic radiator valves
- Double glazed windows

External

- EV charger
- Allocated off-street parking
- Enclosed rear garden

Decoration

- White emulsion walls and ceilings
- White gloss painted woodwork



Ground floor



First floor

Energy assessment

- Predicted energy assessment – B

Key dimensions

Room	Dimensions
Living room	4620mm x 4564mm x 3681mm
Kitchen	2595mm x 2890mm
Bedroom 1	4620mm x 2892mm x 3528mm
Bedroom 2	2456mm x 3784mm
Bedroom 3	2076mm x 2685mm x 3290mm

Any measurements quoted are approximate and must be checked on site and against the layout, which may vary due to unforeseen circumstances. Floor plans may be mirror handed. These details have been produced for illustrative purposes only and does not form any part of a contract or constitute an offer. Actual specification may vary from that shown in floor plan.

How to find us

The development is located on Marehay Road, Ripley. If using a SatNav, the postcode is DE5 8LB.

Buying more shares

The homes are sold on a standard shared ownership lease, so you can purchase more shares to 100% and acquire the freehold.