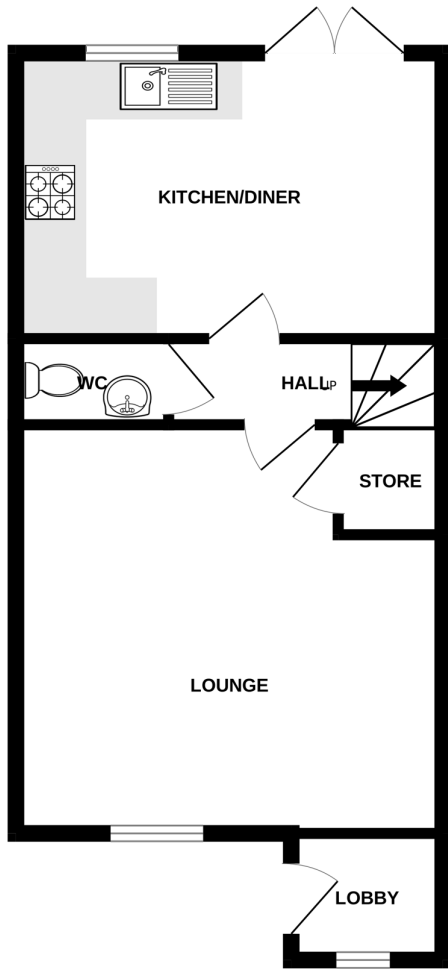
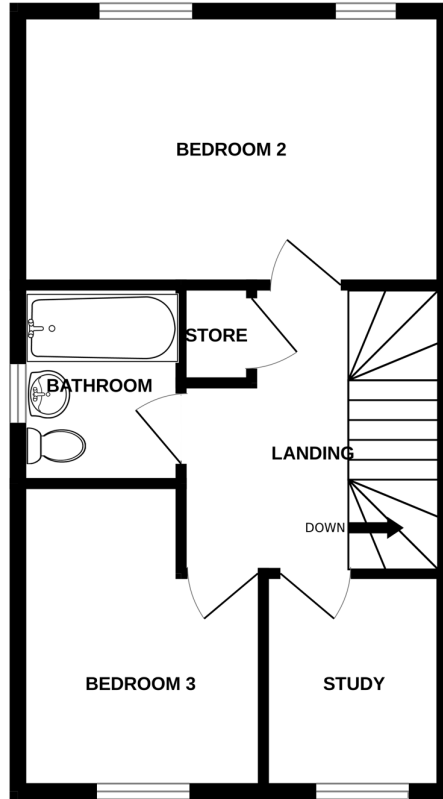


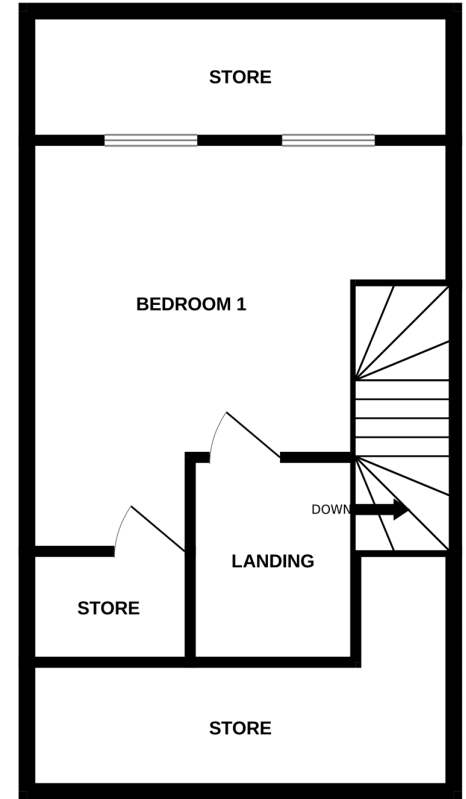
GROUND FLOOR
444 sq.ft. (41.2 sq.m.) approx.



1ST FLOOR
420 sq.ft. (39.0 sq.m.) approx.



2ND FLOOR
420 sq.ft. (39.0 sq.m.) approx.



THREE BED HOUSE - SALBURY

TOTAL FLOOR AREA : 1283 sq.ft. (119.2 sq.m.) approx.

Whilst every attempt has been made to ensure the accuracy of the floorplan contained here, measurements of doors, windows, rooms and any other items are approximate and no responsibility is taken for any error, omission or mis-statement. This plan is for illustrative purposes only and should be used as such by any prospective purchaser. The services, systems and appliances shown have not been tested and no guarantee as to their operability or efficiency can be given.

Made with Metropix ©2026