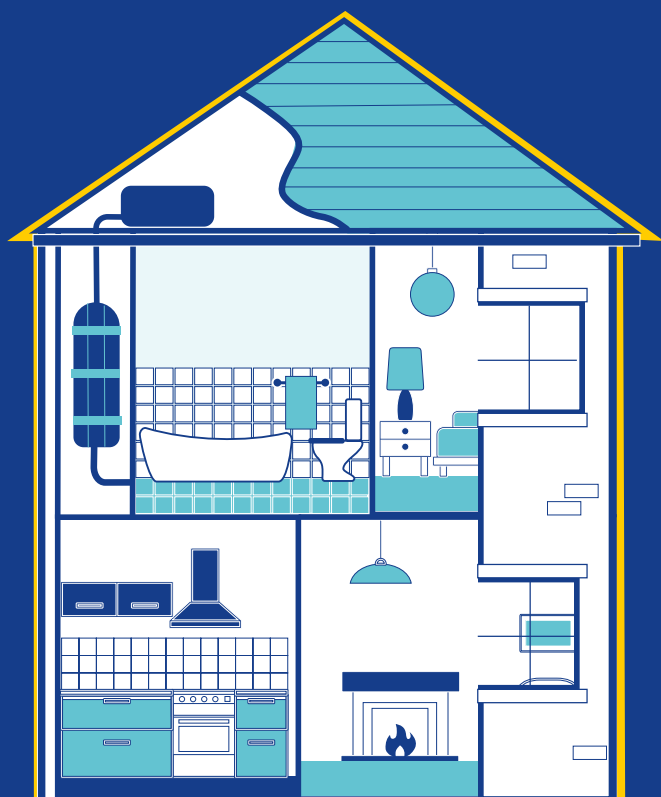


ncha

Asbestos in your home



What is asbestos?

Asbestos is naturally occurring fibrous raw materials. Asbestos fibres are strong and resistant to heat and chemicals. There are many types of asbestos, but its presence can only be determined by testing the material.

Common materials that may contain asbestos include:

- Roofing materials (tiles, guttering, drain pipes, soffit boards)
- Bath panels, fireplaces, flue pipes, cold water tanks
- Decorative wall and ceiling coatings
- Some types of floor tiles and adhesive
- Toilet seats and cisterns
- Some parts of heating systems (including boilers, gas fires and electric storage heaters)
- Insulating boards used for fire protection and ceiling tiles
- Ducting covering service pipes.

In most cases loft or cavity wall insulation does not contain asbestos, but where appropriate we will check to keep you safe.



Asbestos in your home

Asbestos is sometimes found in homes built before 2000, but it is not a problem as long as it's in good condition and not disturbed.

When asbestos is disturbed (for example through DIY or home renovation), fibres can be released into the air. Breathing in these fibres can be harmful to your health. Most materials in homes that contain asbestos aren't a risk, but work with these materials must be avoided.



Where we find asbestos and it's damaged (or could be easily damaged), we will arrange for its removal by our licensed asbestos removal contractor.

Making changes to your home

If there is asbestos in your home, it's important to take extra care when carrying out any DIY.



Don't do any work which involves drilling, cutting or disturbing materials suspected of containing asbestos.



Don't scrape or sand suspected asbestos materials before painting or decorating

Don't attempt to remove any asbestos yourself.

Before you do any DIY, you must inform us of your plans. You can do this via your My NCHA account (visit my.ncha.org.uk to sign in to your account.)



Keeping you safe

We arrange home visits to do a Decent Homes survey every five years to ensure your home is safe and to make sure our records are up to date. If it's likely your home contains asbestos, we may carry out more surveys before completing any works in your home.

The law doesn't require us to remove materials that contain asbestos from your home. If a material becomes damaged that might contain asbestos, we'll remove the asbestos for your safety.

You must allow us access to your home if we need to remove asbestos.


If we've booked a home visit and we can't access your home you may be charged.

Any questions

Please contact us if you have concerns about asbestos:

 Contact us using your My NCHA account. Visit **my.ncha.org.uk** to sign in.

 repairs@ncha.org.uk

 0800 013 8555





ncha.org.uk

