



Marehay Road, Ripley

Two-bedroom semi-detached house - Cromford available to buy through shared ownership

“

A home of your own at a price you can afford

”

 ncha

Specifications

Kitchen

- Fitted modern kitchen
- Integrated oven and hob
- Stainless steel extractor hood
- Contemporary mixer taps
- Vinyl flooring

Bathroom

- White suite with chrome fittings
- Tiling to ceiling around the bath
- Shower over bath
- Glass shower screen
- Vinyl flooring

Heating

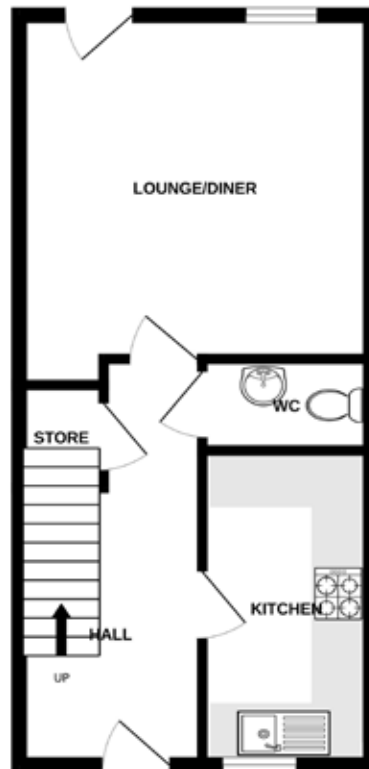
- Gas fired central heating
- Thermostatic radiator valves
- Double glazed windows

External

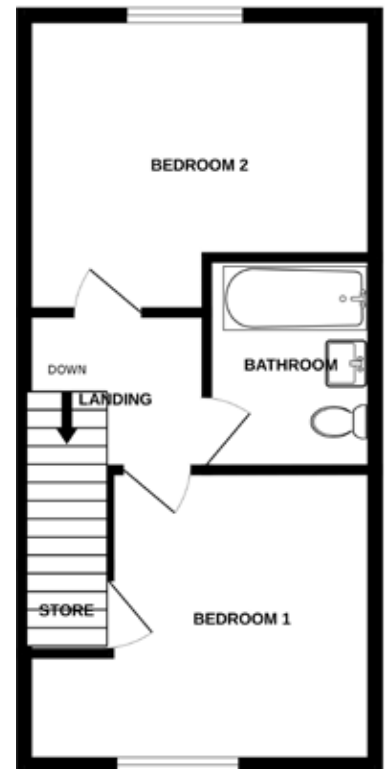
- EV charger
- Allocated off-street parking
- Enclosed rear garden

Decoration

- White emulsion walls and ceilings
- White gloss painted woodwork



Ground floor



First floor

Energy assessment

- Predicted energy assessment – B

Key dimensions

Room	Dimensions
Living room	3879mm x 3960mm
Kitchen	1832mm x 3550mm
Bedroom 1	2892mm x 2868mm
Bedroom 2	3970mm x 3497mm

Any measurements quoted are approximate and must be checked on site and against the layout, which may vary due to unforeseen circumstances. Floor plans may be mirror handed. These details have been produced for illustrative purposes only and does not form any part of a contract or constitute an offer. Actual specification may vary from that shown in floor plan.

How to find us

The development is located on Marehay Road, Ripley. If using a SatNav, the postcode is DE5 8LB.

Buying more shares

The homes are sold on a standard shared ownership lease, so you can purchase more shares to 100% and acquire the freehold.