



# Houghton on the Hill, Leicestershire

2 bedroom bungalows  
available to buy through  
shared ownership



A home of your  
own at a price you  
can afford



# Specifications

## Kitchen

- Range of wall and base units
- Integrated electric oven and gas hob
- Stainless steel extractor hood
- Vinyl flooring

## Bathroom

- Shower room
- Tiled to full ceiling around shower
- Vinyl flooring

## Internal

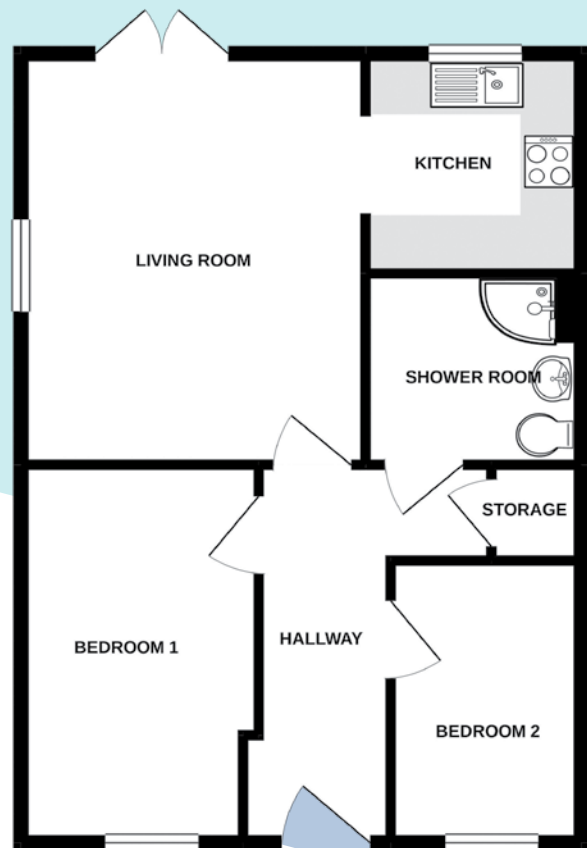
- UPVC double glazing throughout
- Gas central heating with combi boiler

## External

- Enclosed turfed rear garden
- Off-street allocated parking

## Decoration

- White emulsion walls and ceilings
- White gloss painted woodwork



# Energy assessment

- Predicted energy assessment – B

# Tenure

- Leasehold, lease term 125 years

# Key dimensions

Room	Dimensions
Living room	3.90m x 4.67m
Kitchen	2.43m x 2.49m
Bedroom 1	2.69m x 4.35m
Bedroom 2	2.15m x 3.21m

Any measurements quoted are approximate and must be checked on site and against the layout, which may vary due to unforeseen circumstances. Floor plans may be mirror handed. These details have been produced for illustrative purposes only and does not form any part of a contract or constitute an offer. Actual specification may vary from that shown in floor plan.

## 📍 How to find us

The shared ownership homes at Houghton on the Hill are located on the Ashlington Fields Davidsons Homes development. They're available for viewing by appointment only with NCHA Sales. The Sat Nav postcode is LE7 9HJ.

## 🏠 Buying more shares

The shared ownership homes at Houghton on the Hill are sold on a 125 year protected area shared ownership lease. You can purchase more shares to 100%. If you own over 80% and decide to sell, we will buy your home back from you.