



Derwent Street, Belper

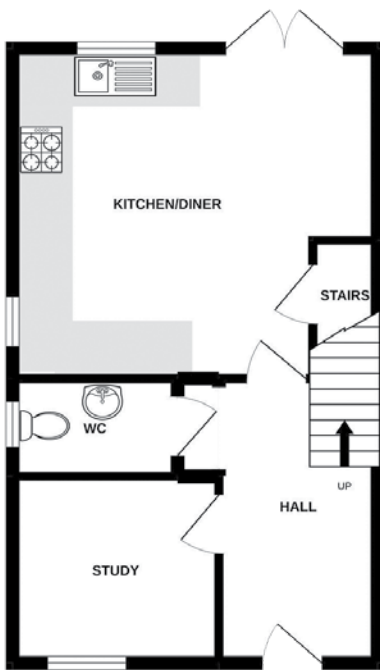
Elm, 3 bedroom homes
available to buy through
shared ownership



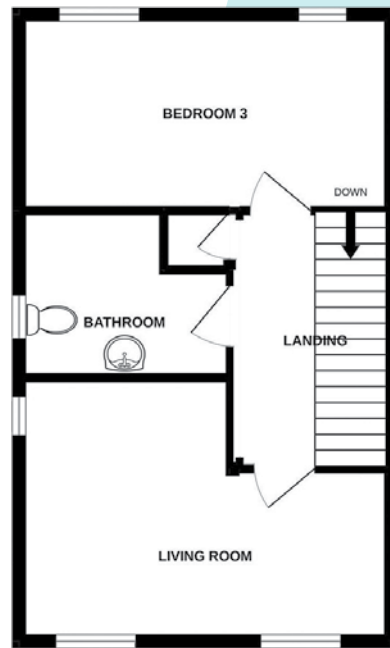
A home of your
own at a price you
can afford



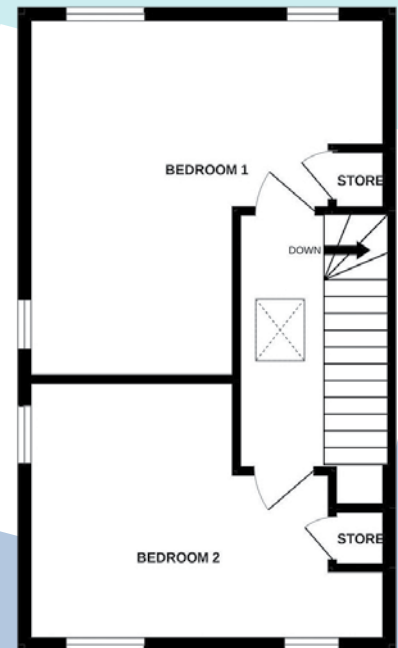
ncha



Ground floor



First floor



Second floor

How to find us

The development is located on Derwent Street in Belper. If using a SatNav, the postcode is DE56 1WN.

Buying more shares

The homes are sold on a standard shared ownership lease, so you can purchase more shares to 100% and acquire the freehold.

Specifications

Kitchen

- Fitted modern kitchen
- Integrated oven and hob
- Stainless steel extractor hood
- Vinyl flooring

Bathroom

- White bath suite with chrome fittings
- Tiling to ceiling around the bath
- Shower over bath
- Glass shower screen
- Vinyl flooring

Heating

- Gas fired central heating with combi boiler
- Thermostatic radiator valves
- Double glazed windows

General

- Enclosed rear garden
- Off-street allocated parking

Decoration

- White emulsion walls and ceilings
- White gloss painted woodwork

Energy assessment

- Predicted energy assessment – B

Key dimensions

Room	Dimensions
Kitchen / dining	4.687m x 4.251m
Living room	4.728m x 3.471m
Bedroom 1	4.727m x 4.412m
Bedroom 2	4.727m x 3.590m
Bedroom 3	4.727m x 2.520m
Study	2.536m x 2.517m

Any measurements quoted are approximate and must be checked on site and against the layout, which may vary due to unforeseen circumstances. Floor plans may be mirror handed. These details have been produced for illustrative purposes only and does not form any part of a contract or constitute an offer. Actual specification may vary from that shown in floor plan.



0345 650 1204



nchasales@ncha.org.uk



www.ncha.org.uk



@NCHASalesTeam



@NCHASalesTeam



@NCHASales